

# PROPERTY

THE PROPERTY MAGAZINE

GAUTENG

PEOPLE PLACES PERSPECTIVES

NOVEMBER 2008

**PROPERTY OF THE MONTH**  
New World chic

**PLETT'S LITTLE SISTERS**  
Keurbooms & The Craggs

**PLACE WITH A PAST**  
Liliesleaf

**SHAPE OF THINGS TO COME**  
Bam Architects

**MY FIRST HOUSE**  
Jerry Mofokeng

BUYING PROPERTY IN LONDON  
**MADE IN ENGLAND**

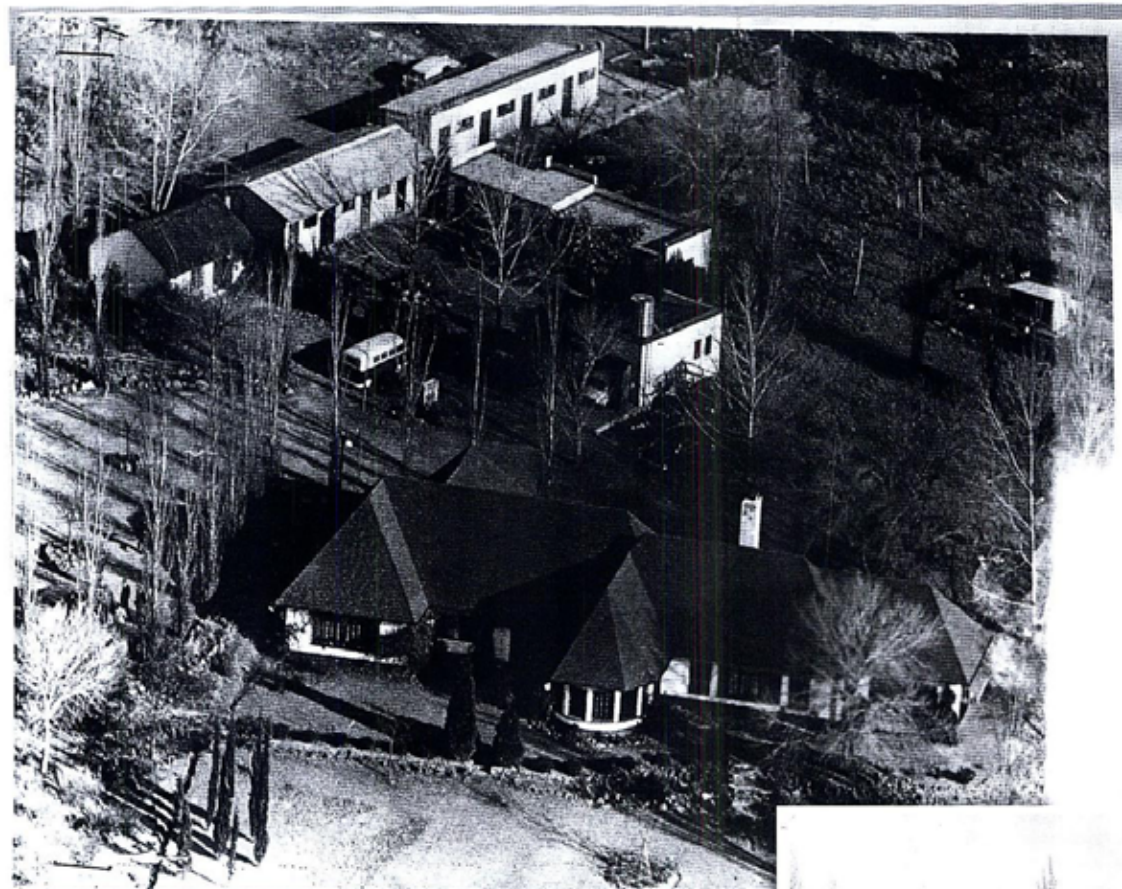
RSA R24.95 (INCL VAT) UK £2.50  
OTHER COUNTRIES R21.90 (EXCL TAX)



Property Solutions by Wayne Brownhill, Redhill Road, Morningside, Yeam rd 87-million, Wayne 083 726 5657, Mandy 083 407 0745

**HOT PROPERTY GAME FARMS, GOLF ESTATES AND MARINE LIVING**

[PLACEWITHAPAST]



**N**early half a century ago, Liliesleaf, a 28-acre farm situated 19 kilometres north of Johannesburg, was purchased by the SACP (South African Communist Party) as a place where its senior leaders and members of the ANC (African National Congress) could meet in privacy and safety after the two parties were banned by the South African government.

As a white South African, SACP member Arthur Goldreich and his family moved onto Liliesleaf Farm, operating it as a conventional farm, while its thatched cottage and outbuildings were used to conceal underground activities. High-ranking members of the ANC and SACP, including Nelson Mandela, Govan Mbeki, Walter Sisulu, Ahmed Kathrada, Bram Fischer, Joe Slovo, Ruth First, Raymond Mhlaba, Lionel 'Rusty' Bernstein, Bob Hepple, Harold Wolpe and Denis Goldberg, were among those who used it as a safe-house and regular meeting place.

The year Liliesleaf was purchased coincided with the decision by the ANC to take up the armed struggle and, as a result, the farm evolved into the headquarters of Umkhonto we Sizwe (MK), the military wing of the ANC. For two years, key debates on political and military policy and strategy were held at Liliesleaf.

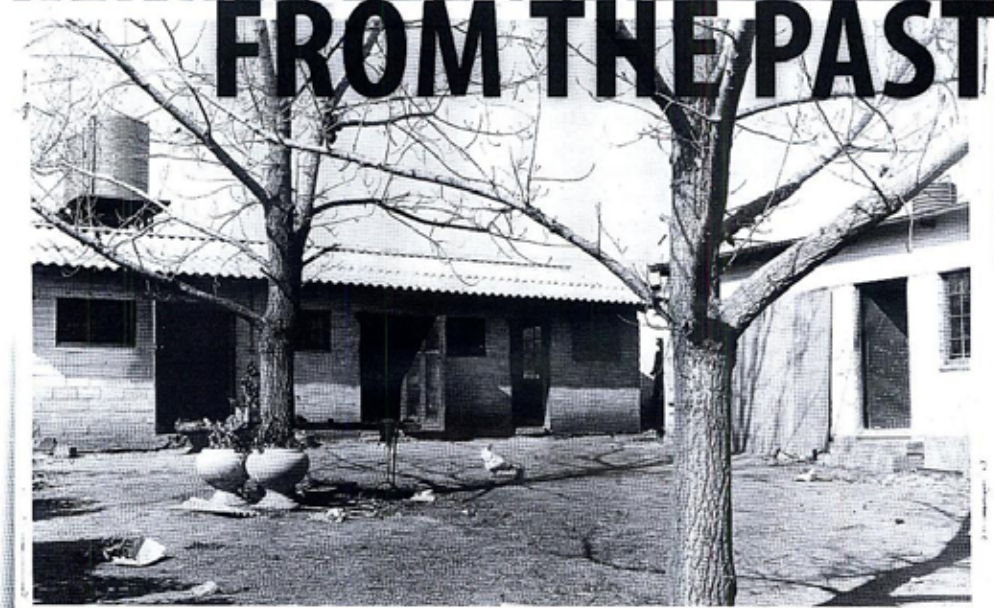
But by 1963, the leadership felt that Liliesleaf was no longer a safe place for meetings. Travelling,

Words Ayre Stewart  
Photographs Simon Von Der Molen

# TAKING A LEAF FROM THE PAST



**Liliesleaf Farm, the birthplace of Umkhonto we Sizwe and the site of the police raids that led to the Rivonia Trial, has been resurrected as a museum, resource centre and Heritage site.**



© Images courtesy of Historical Papers, The University of Witwatersrand